



Simple innovative solutions.



Powerful diagnostic tools. High-resolution images. Incredible speed.

The benefits of digital radiography are readily apparent to dental professionals. No longer experimental, digital radiography is instrumental: emerging as the standard technology of the present as well as the future.

Within these pages, you'll discover exhilarating new tools — and new possibilities — that can invigorate your practice with increased efficiency, higher return on investment and a leadership image among your patients and colleagues.

Exciting as the prospect of digital radiography is, it's just one part of our totally integrated practice.

Digital radiography captures clear, precise digital radiographs, which can be enhanced for increased visibility using specialized imaging software. These images are stored in electronic patient charts which you and your staff can easily access and share. And it all works together in one simple-to-use solution that can help make your practice more effective, more efficient and more profitable. We are your single source for the technology needed to help transform your office into the digital practice of the present — and future.

Your digital evolution starts here...





Accuracy and safety.

The new Kodak 2200 intraoral x-ray system features the performance of the previous generation of Kodak x-ray units plus an improved design for more accurate diagnosis and ease of use. The system is designed to meet all your needs for comfort, safety and efficiency. A very high frequency (DC) x-ray generator supports superior image quality and better safety conditions for your patients and your staff.

Improving diagnostic confidence.

Our very high frequency generator allows you to obtain high image quality while minimizing radiation exposure. Equipped with a focal spot of 0.7 mm and a dental arch timer, it yields high quality precision images with accentuated contrast and levels of gray shading.

Ideal for digital radiography.

The Kodak 2200 system operates with both film and digital imaging devices, and the short exposure times allow the unit to be used with our full range of dental digital radiography systems.

Technical Specifications

Frequency	DC – 300kHz
Exposure voltage	60 kV, 70 kV
Exposure current	7 mA (film and digital)
Power supply	100/110/130/230 –240V, 50/60 Hz
Current	100V-10A, 240V-5A
Equipment certification	UL-C/CE

Maximum image quality. Minimum exposure.

Depending on the anatomical region to be examined, the body weight of your patients and the kind of detector used, the Kodak 2200 system automatically sets and times precise exposure. This precision helps minimize radiation exposure for your staff and your patients. The pre-programmed electronic timer calculates settings automatically for fast and easy operation.

Improved safety conditions.

Very high frequency technology reduces the radiation exposure up to 25% in comparison with a standard generator. The system emits constant radiation, maximizing useful rays to significantly reduce levels of radiation. (put chart here)

Total control. Improved comfort.

The Kodak 2200 system is equipped with adjustable tube voltage (60 or 70 kV) to accentuate contrast or levels of gray shading according to the examination requirements. This advanced control helps you obtain the image you need, optimized for your diagnosis.

Focal spot	0.7 mm
Focal length	8 in
Dimensions of wall mount	7 in (W) x 5 in (H) x 21 in (L)
Mounting	Left horizontal, right horizontal, vertical
Arm length options	67 in, 74 in, 80 in

Kodak 2200
Intraoral X-Ray System





Digital speed. Maximum resolution.

The Kodak RVG 6100 digital radiography system lets you capture and analyze dental radiographs quickly and easily. With true resolution greater than 20 lp/mm, the RVG 6100 system delivers the highest resolution of any digital radiography system in the industry. It's designed for those who are seeking maximum precision, and, like all of our products, gives superior results while being exceptionally easy to use.

More practical. More comfortable. More reliable.

We strive to deliver excellence by constantly enhancing its products and incorporating customers' feedback, resulting in superior products tailored to meet your needs. With the new RVG sensor design, positioning is easier than before. The rounded corners of the sensor are more comfortable for patients, and the new cable attachment helps ensure reliability.

A new sensor for pediatric examinations.

Specially designed for pediatric applications, the new RVG 6100 sensor, size 0, minimizes exposure by as much as 40%. Its reduced size and specific set of positioners allow correct and comfortable positioning of the sensor in small mouths.

Easy to use. Easy to integrate.

The sensor remote control allows for convenient, chairside image capture so you can stay focused on your patients. A complete set of positioners helps make proper sensor placement faster. With the USB 2 technology, your radiographs are displayed in less than two seconds, minimizing the waiting time.

Technology you can rely on.

The technology behind the RVG 6100 system is the result of decades of experience in digital radiography systems engineering. RVG sensor technology with optical fiber yields high image resolution to help make confident diagnoses every time. The technology also provides greater exposure latitude to help you capture the right image the first time.



Drawing the line (pair) on quality.

Spatial image resolution is measured in line-pairs per mm (lp/mm), or how many pairs of lines can be discerned within 1 mm. Traditional film, with a resolution of greater than 20 lp/mm, serves as a basis of comparison to digital imagery.

The potential of higher resolution is unlocked when you're able to view the results on a large computer screen. Higher resolution equates to more available data, providing you with greater capabilities to analyze the images than those afforded with lower resolution images. You can use filters and magnification tools in the software to capitalize on this detail for better viewing and confident diagnoses. Added detail hidden in a digital radiograph comes to life when you magnify and accentuate critical areas of interest. The high image resolution offered by the RVG 6100 system (greater than 20 lp/mm) helps you diagnose with accuracy.



Technical Specifications

	Sensor Size 0	Sensor Size 1	Sensor Size 2	
True image resolution	14 lp/mm	Greater than 20 lp/mm	Greater than 20 lp/mm	
Connection	USB 2 - high speed			
Technology	RVG sensor technology with optical fiber technology			
Purpose	Pediatric examinations	General-purpose sensor	Bitewing radiographs	
Outside dimensions	22,2 x 30,8	mm	27,5 x 37,7 mm	32,2 x 44,1 mm
Dimensions of active area	17 x 22 mm		22 x 30 mm	27 x 36 mm
Matrix dimensions (pixels)	900 x 1200	1200 x 1600	1440 x 1920	

Kodak RVG 6100
Digital Radiography System





Kodak CR 7400
Digital Radiography System



Easy and flexible.

Providing unsurpassed ease of use, flexibility and integration, the Kodak CR 7400 system can help make the move to digital radiography both simple and affordable. Complete integration with our imaging software suite allows you to add system components to expand your future digital diagnostic options.

Easy to use.

Since the Kodak CR 7400 system works just like film, you can utilize your existing x-ray equipment, positioners and techniques, minimizing the learning curve and workflow interruption for you and your staff. Plates are even marked for placement and orientation, streamlining workflow.

Flexible for all types of examinations.

The Kodak CR 7400 system provides a seamless transition to digital for all of your intraoral and extraoral imaging needs. Thin, flexible imaging plates in a variety of sizes (0 to 4) provide a full range of intraoral diagnostic applications.

Cost-effective digital solution.

With the Kodak CR 7400 system, you can use your existing analog panoramic/cephalometric unit for extraoral images. The compact tabletop design of the scanner saves space and allows you to share the system between operatories, enhancing return on investment.

Accessories to expand the versatility of your system.

You can expand the power of your Kodak CR 7400 system by adding additional plates, cassettes and holders as you need them. You can even use the system with our other direct digital radiography products, further enhancing your diagnostic abilities.

Support and guidance you can count on.

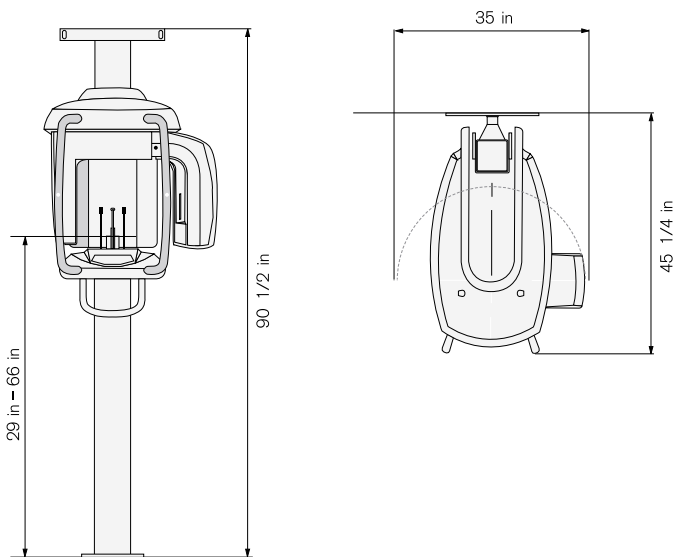
Exclusive remote access diagnostics help identify and correct up to 90% of all machine errors, minimizing downtime and eliminating the need for certain service calls.

Technical Specifications

Scanning Resolution	Panoramic/	Standard resolution—4.5 lp/mm
	Cephalometric	High resolution—7 lp/mm
	Intraoral	Standard resolution—8 lp/mm
		High resolution—10 lp/mm
Plate Size	Panoramic	5" x 12", 15 cm x 30 cm
	Cephalometric	8" x 10", 18 cm x 24 cm
	Intraoral	#0 - 21 x 31 mm, #1 - 24 x 40 mm ,
		#2 - 31 x 41 mm, #3 - 27 x 54 mm, #4 - 57x 76 mm
Scanning Time	Panoramic	74 seconds
	Cephalometric	95 seconds
	Intraoral – High Resolution	67 Seconds
	Intraoral – High Speed	40 Seconds
Image File Size	Panoramic 15 cm x 30 cm	7.5 MB
	Cephalometric 8" x 10"	8.5 MB
	Intraoral #2 -31mm x 41mm	800 KB

Note: Scanning times may vary according to plate quantity and configuration.

Kodak CR 7400
Digital Radiography System



Incredibly powerful.

Quickly capture precise panoramic, segmented panoramic, TMJ and maxillary sinus images. The Kodak 8000 digital panoramic system uses a digitally controlled high-frequency generator, which minimizes patient radiation dose. Image programming is carried out on your computer, rather than on the unit, turning image capture into an intuitive, step-by-step process.

Technical Specifications

Physical space requirements	35" (W) x 90.5" (H) x 45.25" (D)
Patient positioning	Frontal with 3 laser beam guides and 4-point head rests
Acquisition	Direct and in real time
Gray scale level	4,096 – 12 bits
Radiographic modes and exposure times (in seconds)	Panoramic 13.9 Maxillary sinus 10.7 TMJ 2 lateral views 4.6 TMJ 4 lateral views 9.2
Generator	High frequency (70 kHz)
Voltage	230–240 V/50 Hz 100–130 V/60 Hz

Tube voltage	60–90 kV (in 1 kV steps)
Exposure reduction	Up to 70%, compared to film
Digital sensor	CCD sensor + protective optical fiber plate
Matrix dimension	2,500 x 1,244 pixels
Cathode current	2–15 mA
Focal spot	0.5 mm IEC
Total filtration	>2.5 mm eq. Al
Enlargement	x 1.27
Weight	264 lbs.



Effective and affordable.

The Kodak 8000 system delivers clear and optimally exposed images in seconds helping you to make fast, accurate diagnoses, streamline practice workflow and improve communication with patients and colleagues.

Put patients at ease.

Many panoramic systems cause patients to feel nervous – with their back to the operator, they don't know what's going on. But the Kodak 8000 system is designed to allow a more comfortable face-to-face position, providing more comfort for your patients, easier positioning and fewer alignment errors. The ergonomic design is also accessible for children and disabled patients.

Think big picture.

The Kodak 8000 system is surprisingly affordable and offers a healthy return on investment. First, because it's so easy to use, you can save time on each appointment. And because it's digital, consumable costs are reduced. Finally, patients see value in knowing that your practice affords them access to some of the most advanced diagnostic equipment available.

- Capture images in real time.
- Acquire TMJ, maxillary sinus, panoramic or segmented images.
- The operator faces the patient during operation for greater control and a more relaxed session.
- Minimize radiation exposure while maximizing diagnostic capabilities.



Kodak 8000
Digital Panoramic System



Technical Specifications

Physical space requirements	110.25" (W) x 91.25" (H)
(minimum)	x 49.5" (D)
Installation configurations	A variety of configurations available
Patient positioning	Includes ear supports, adjustable graduated nasion support and Frankfort positioning laser beam
Cephalometric exposure times	0.1–3.2 seconds
Magnification	X 1.15
Grayscale level	4,096 – 12 bit



Improved image quality.

Powerfully simple and surprisingly affordable, the Kodak 8000C digital panoramic and cephalometric system delivers newly-improved, clear, optimally exposed panoramic and cephalometric images in the blink of an eye. The improved system provides practitioners consistent digital x-ray images and a higher level of resolution. Now doctors can make fast, confident diagnoses, streamline practice workflow and improve communication with patients and colleagues.

“One Shot” cephalometric imaging.

The Kodak 8000C system is the first direct digital cephalometric system that can expose standard cephalometric images in a single shot. Until now, direct digital systems scanned a patient's head taking as much as 8 to 18 seconds. Our “One Shot” technology captures the image in just over a second, reducing the risk of blurred images and improving the patient's comfort. Rather than relying on horizontal or vertical scans, the fast image acquisition allows the same workflow as traditional film system.

In addition to the optic and software enhancements, the positioning accessories have been redesigned to better secure the head of the patient. These changes have a direct impact on image quality since potential blurring due to patient's movement will now be reduced and there will be a better superimposition of the left and right structures of the skull.

Easier by design.

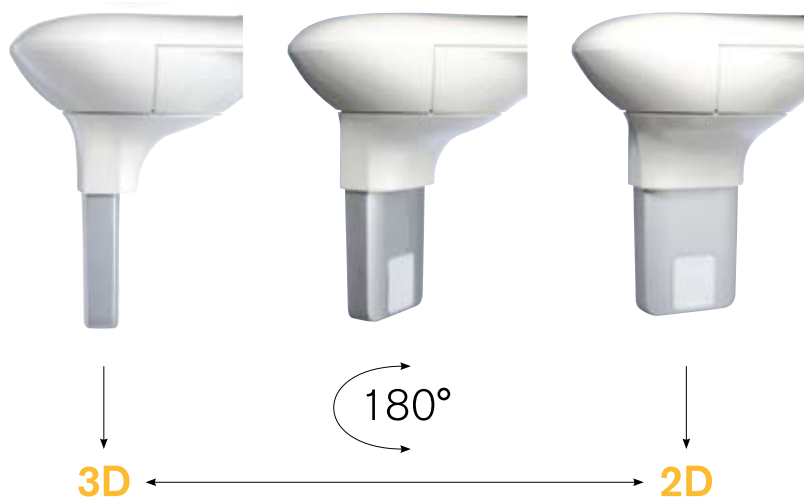
The design of the Kodak 8000C system allows doctors to perform all the image programming on the computer, with a user-friendly interface. Easy-to-follow steps make it fast and simple to set all patient and image parameters.

Complete digital imaging solution.

The Kodak 8000C system provides a completely integrated, digital solution for greater ease of use and practice efficiency. Digital radiographs acquired with the Kodak 8000C system can be integrated into practice management software, while the imaging software provides cephalometric tracing, treatment planning and soft tissue morphing modules.

Kodak 8000C
Digital Panoramic and Cephalometric System





2-in-1 panoramic and 3D solution.

The Kodak 9000 3D Extraoral Imaging System is an easy-to-use, two-in-one imaging system providing high-quality panoramic and focused-field 3D images at an affordable price. Take advantage of the 2D panoramic and focused-field 3D, all in one machine. Optimal panoramic quality due to variable focal trough helps you to get the right shot every time. Focused field 3D images provide for anatomically accurate visualization. The 3D software is easy to learn and use and can be shared with referring practitioners.

Two-in-one solution.

One of the many outstanding features of the KODAK 9000 3D System is its combination of dedicated 2D panoramic and 3D cone beam technology.

Real panoramic technology.

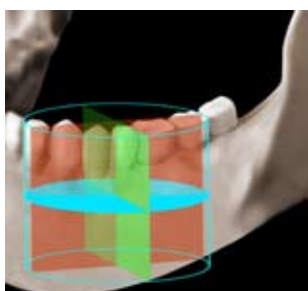
Panoramic images are near-obligatory first step in most examinations and treatments, given their complete dentition overview. With such frequency of use, you will appreciate having the KODAK 9000 3D System's true panoramic technology at your disposal.

Real 3D technology.

Our 3D technology provides an extraordinary level of detail... from all angles. There's no longer a need to reconstruct "best guess" mental representations of patient anatomy. This is the beauty of 3D technology: it yields anatomically correct images on-screen.

Responsible radiation.

Localized viewing also reduces radiation exposure compared to larger field 3D systems. In other words, you improve image quality, while providing better protection for your patients.





3-in-1 solution, exponential productivity.

Smaller footprint, still greater efficiency.

The unit's footprint has decreased while the number of image formats has increased. The Kodak 9000C system generates lateral, frontal and submento-vertex images with constant reproducibility. Acquisition lasts less than a second, diminishing exposure time and the risk of retakes due to patient movement.

Exclusive range of image formats.

Thanks to its motorized collimator, the Kodak 9000C system is the only unit on the market to offer as broad a range of cephalometric formats. It suits any orthodontic tracing need, from our exclusive full skull (30 x 30 cm), to standard (18 x 24 cm) and small field for lower dose exposures.

Software that makes a difference.

Uniquely simple and powerful software operates the unit to enhance the imaging experience and save time. Orthodontic pre-set filters improve image clarity with one click, an automatic filter outlines soft tissue, and exclusive automatic landmark recognition offers instant identification of landmarks so tracing is easier and faster.

Conceived for ease of use.

Multiple sensor configuration, one for each application (panoramic, cephalometric, 3D), means no manipulation of delicate and expensive parts by you or your staff. Meanwhile, a simple and straightforward design makes mastering the unit a cinch.

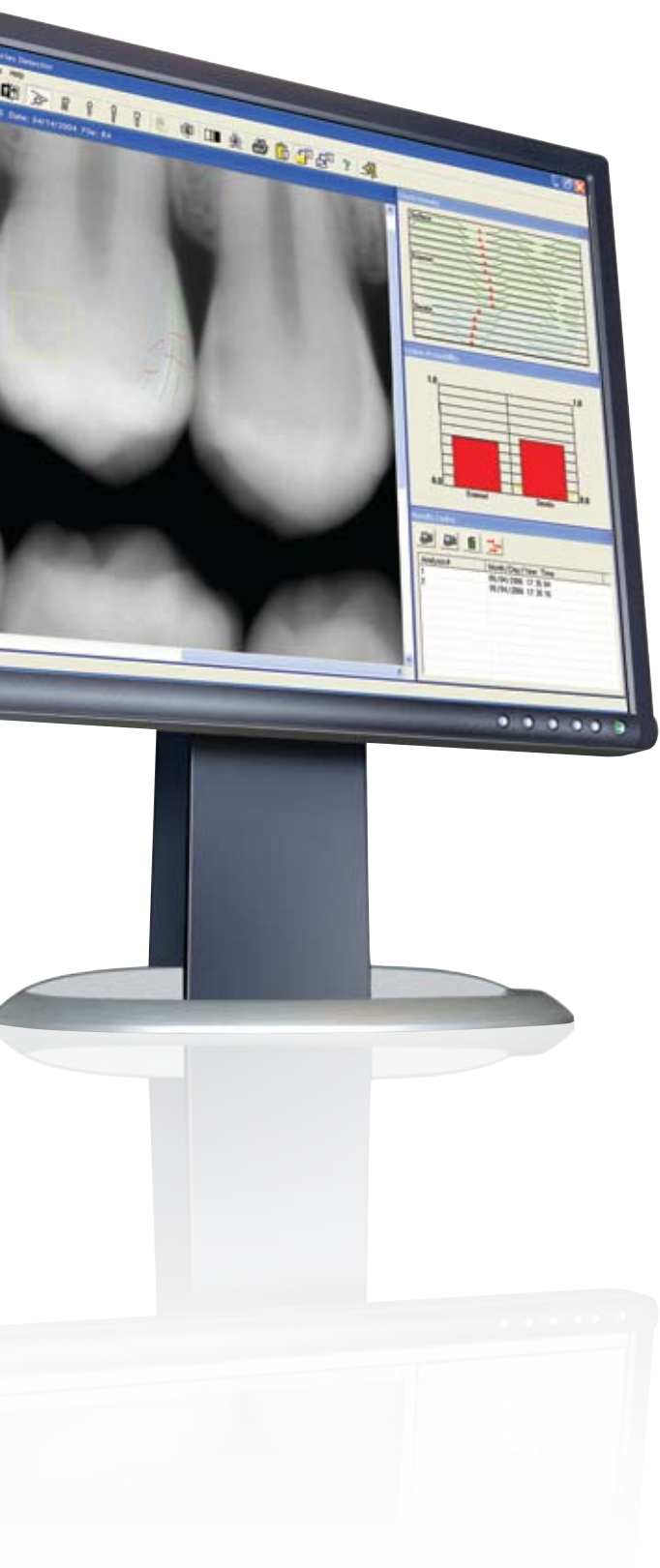
Technical Specifications

X-ray tubehead	High-frequency 140 kHz - 60-90 kV - 2-15 mA
Input voltage	230-240 V - 50/60 Hz or 100-110-130V - 50/60 Hz
Tube focal spot	0.5 mm (IEC 336)
Total filtration	> 2,5 mm eq. Al
Panoramic images	Adult / Child panoramic, sinus, Lateral TMJ (2 and 4 views), segmented panoramic
Cephalometric images	Half and full lateral (18x18 cm, 18x24 cm, 24x24 cm, 24x30 cm, 30x30 cm), frontal (AP/PA), oblique, submento-vertex, carpus
Cephalometric exposure times	0,1 - 3,2 seconds
Magnification	Panoramic: x1,27 / Cephalometric: x 1,14

Kodak 9000C/9000C 3D

Extraoral Imaging System





Simple innovative solutions.

Add software to your practice that is clinically proven* to help dentists find more interproximal carious lesions than with traditional methods. Logicon caries detector™ software is a unique tool that assists in the daily task of diagnosing radiographs for proximal caries.

Diagnose more caries with confidence.

Logicon software extracts image features and correlates them with a database of known caries problems. In doing so, the software automatically highlights surface abnormalities on patients' digital dental radiographs. A clinical study shows that Logicon software enabled dentists to find 20% more cases of interproximal caries in permanent teeth than they were able to find without the software.

Improved patient care.

An optional component with Kodak RVG digital radiography systems, Logicon software is a computer-aided-detection tool that helps provide dentists an important decisionsupport instrument for better patient care.

*Gakenheimer, David C. "The Efficacy of a Computerized Caries Detector in Intraoral Digital Radiography." Journal of the American Dental Association 133 (2002): 883-890



■ The right tools to enhance patient care.

Easy to use and integrate.

Designed to work with our family of imaging devices, our imaging software helps you manage and analyze all of your digital images. Each patient's images are well-organized for easy access and can be quickly analyzed to help you provide your patients with the highest level of professional care.

Simple, efficient, and intuitive, our imaging software provides tools to help you make fast, confident diagnoses. It can be used with its own patient file as a stand alone program, or it may be integrated with your existing practice management software.

Work smarter and more efficiently with image management and processing tools designed specifically for the Kodak RVG 6100 digital radiography system, the Kodak 8000 and 8000C digital panoramic and cephalometric systems and the Kodak 1000 intraoral video camera.

- The image processing functions feature digital x-ray tools and controls such as contrast and brightness, three pre-defined optimized image viewing modes (periodontics, endodontics, and DEJ), high-resolution filter, highlight, zoom, measurements, negative video, pseudo-colors, sepia filter, pseudo 3D, relief filter, density analysis tools, drawings and comments, and the optional Kodak cosmetic imaging software.
- In the display mode, choose between viewing your individual images full screen or actual image size. View and compare your digital x-rays in operative radiology mode, four image bitewing mode, or within a variety of full mouth series mounts.
- Keep a detailed image log per patient, conduct a detailed image search and delete, archive, and import/export images.
- With the printing and transfer function, print all image types, reports, and send images by email (with or without our image viewer).

Kodak
Imaging Software



Central elements of a digital practice.

All these digital radiography products are hardware elements of the advanced digital practice. The images they capture are processed on your PC using Kodak imaging software, while Kodak practice management software ties the whole system together. With Kodak practice management software, you can catalog images from our suite of digital imaging solutions – including intraoral radiography, panoramic and cephalometric images as well as scans of traditional film images and images from intraoral and extraoral digital cameras— and create electronic patient charts which are accessible from any workstation in your office. From the operatories to the front desk, information is easily shared with patients, insurers and other practitioners.

Explore the complete spectrum of digital imaging products that work together seamlessly with Kodak imaging software and Kodak practice management software to create today's digital practice.



With the future ahead, we stand behind you.

We'll help you plan a smooth transition to our digital radiography systems. We'll be there to train you and your staff, so your practice and your patients enjoy the benefits of the integrated practice from the very first day. Once you're up and running, you'll find we're there for you whenever you need help or support.

Take advantage of high-tech support.

You'll appreciate the added peace of mind that comes from knowing your hardware investment has extra protection. Supplement your basic equipment warranty with one of our advantage plans, which includes unlimited toll-free or email technical support, imaging software updates and other benefits.

Would you like to know more?

For more information regarding our digital solutions, call 800.944.6365 or visit www.kodakdental.com.



PracticeWorks, Inc.

©PracticeWorks, Inc. 2008.
OrthoTrac, PracticeWorks, RVG, SoftDent and WinOMS are trademarks of Carestream Health.
The Kodak trademark and trade dress are used under license from Kodak.

Logicon Caries Detector is a trademark of Northrop Grumman Corporation.

2160 05/20/08